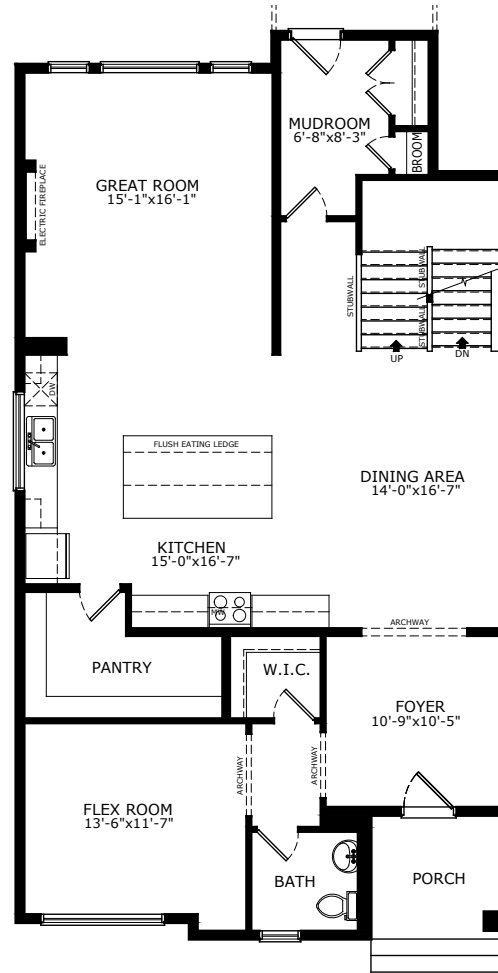


# Sterling HOMES

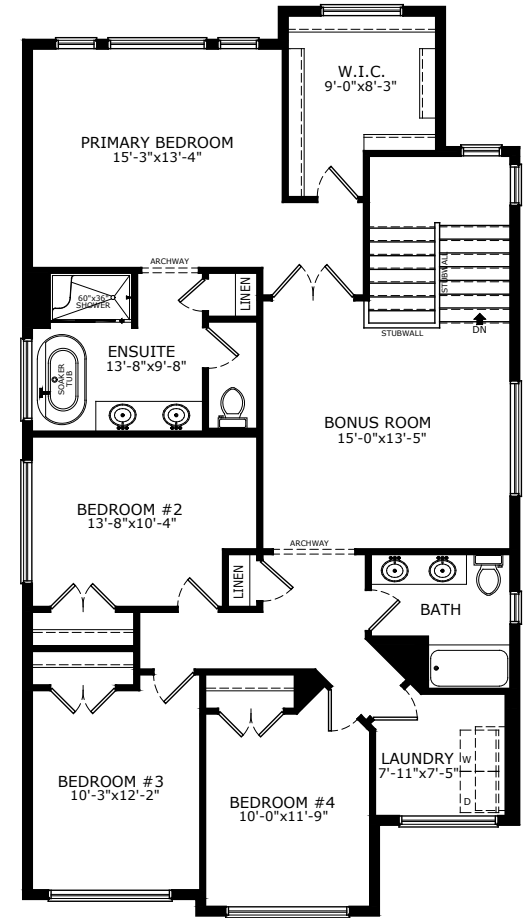
A QUALICO Company

2946 SQ FT  
4 BEDS  
2 FULL, 1 HALF  
BATH

# EDGEWOOD



MAIN: 1507 SQ FT



UPPER: 1439 SQ FT

Build Your Life

STERLINGCALGARY.COM

# Sterling HOMES

A QUALICO Company

## ELEVATIONS



CRAFTSMAN

FARMHOUSE



MODERN

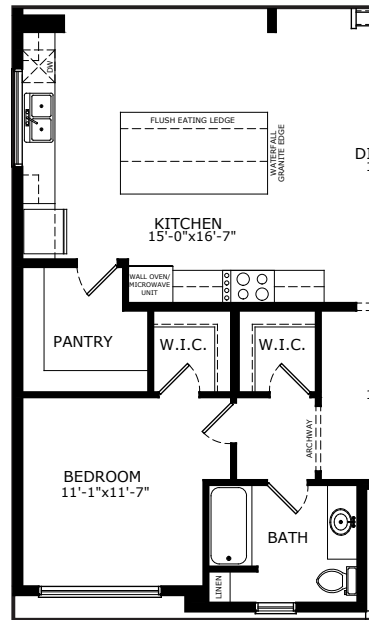
MODERN  
STUCCO



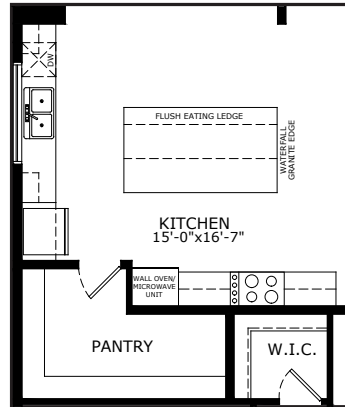
PRAIRIE

## MAIN FLOOR OPTIONS

OPTIONAL EXECUTIVE KITCHEN  
AND FULL BATH AND BEDROOM #5



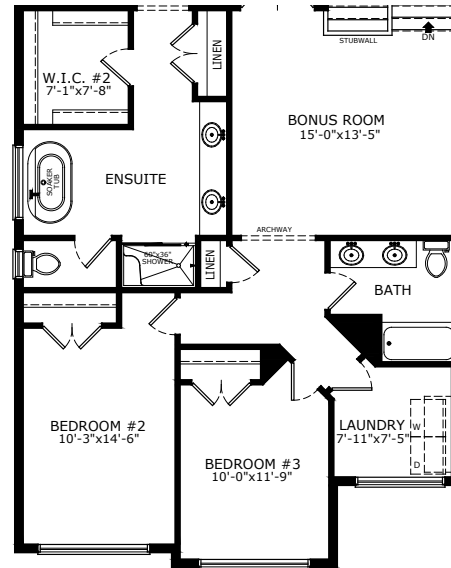
OPTIONAL EXECUTIVE KITCHEN



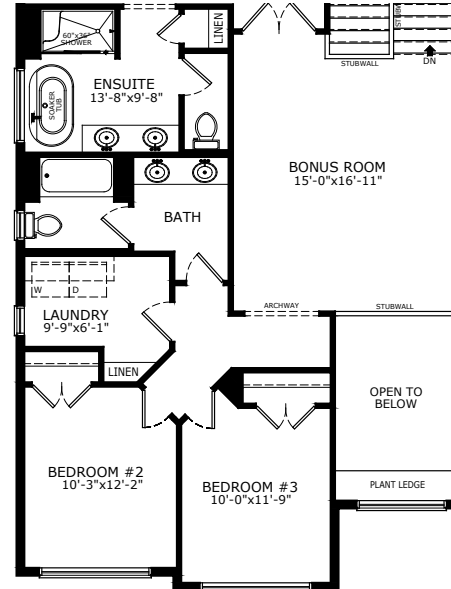
Optional Island Cooktop Available

## UPPER FLOOR OPTIONS

OPTIONAL BEDROOM #3

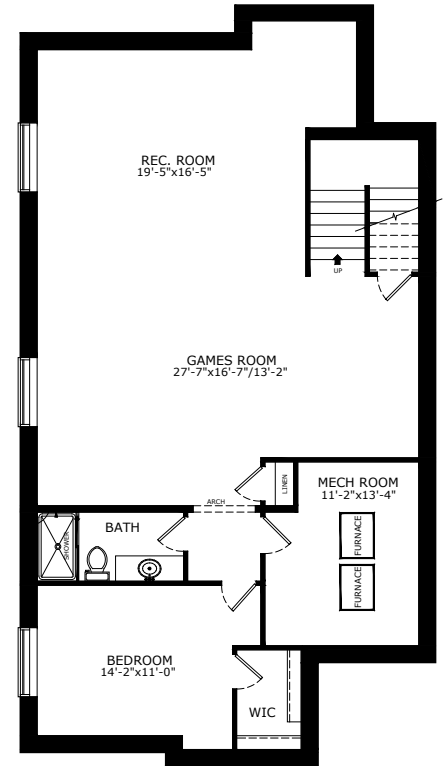


OPTIONAL BEDROOM #3 OPEN TO BELOW



## BASEMENT OPTIONS

STANDARD 1168 SQ FT



\*Legal Suite availability varies by community and municipal regulations.



Scan here  
for floorplan  
options and  
more

# Build Your Life

STERLINGCALGARY.COM